

LUMINESCENCE® DIAMOND POLISHING GEL

FOR COMPOSITES AND PORCELAIN

CE 2460

Rx Only REF CFMPSSG3005

Manufactured by:
**abrasive
technology®**

8400 Green Meadows Dr. N.
Lewis Center, OH 43035 USA
www.abrasive-tech.com

EC REP: Abrasive Technology Ltd.
Unit 11 Boundary Business Ct.
Mitcham, Surrey CR4 3TD UK

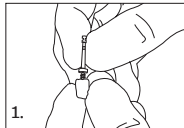
INSTRUCTIONS FOR USE

Two Striper® Luminescence® Diamond Polishing Gel is intended for intraoral use only under the professional supervision of a dentist.

Before use, the surface to be polished should be finished with Two Striper® micron diamonds (or other suitable instrument) to a fine finish with all necessary surface contouring completed.

The gel can be used on most restorative materials. It creates superior polished surfaces on microfil and hybrid composites, glass ionomers, amalgam, precious metals and porcelain.

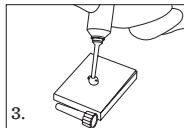
1. With a clockwise motion, screw the felt applicator onto the RA mandrel and insert it into a low speed handpiece. The optimal polishing speed is between 8,000-10,000 RPMs.



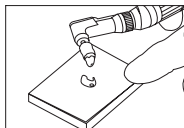
2. Caution - DO NOT POLISH USING A PROPHY CUP. No additional luster will be gained and it will generate unnecessary heat.



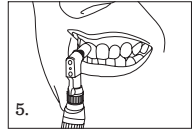
3. Remove the syringe cap and carefully dispense a small amount of the diamond gel. To stop the flow of gel, pull back on the plunger.



4. Completely cover the face of the felt applicator with gel.



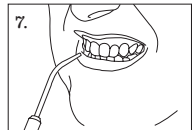
5. Polish the surface for 30 seconds (60 seconds for porcelain) using a circular motion and moderate pressure.



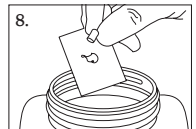
6. Dip the felt applicator in water to slightly dilute the diamond concentration. **Do not add more gel.** Polish again for another 30 seconds (60 seconds for porcelain). Repeat Step 6.



7. Rinse when finished.



8. Properly dispose of the used materials. Clean and sterilize the mandrel prior to re-use.

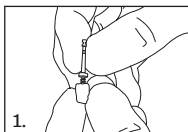


www.twostriper.com/instructions

Two Striper®, Luminescence® are registered trademarks of Abrasive Technology.

©2019 REV 1.19

Istruzioni per l'uso • Mode d'emploi • Gebrauchsanweisung • Instrucciones de uso



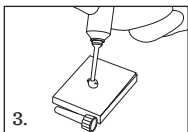
1.

1. Con un movimento in senso orario, avvitare il feltrino sul mandrino CA. Inserire questo mandrino nell'apposito manipo a bassa velocità. La velocità di lucidatura ottimale è tra i 8.000-10.000 RPM.
1. Visser l'applicateur de feutre sur le mandrin RA. Les meilleures vitesses de polissage se trouvent entre 8000 et 10 000 tr/mn.
1. Den Filzapplikator auf das Wst.-Mandrel aufschrauben. Die beste Poliergeschwindigkeit liegt zwischen 8000 bis 10000 RPM.
1. Atornillar el aplicador de fieltro en el contra-ángulo (RA). La velocidad de pulido óptima es de 8.000 a 10.000 rpm.



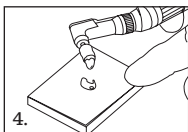
2.

2. Attenzione - NON LUCIDARE UTILIZZANDO UN PROPHY CUP. Non si otterrebbe comunque un grado di lucidatura migliore, e la prophy cup genererebbe solo calore non necessario.
2. Attention : NE PAS POLIR EN UTILISANT UNE CUPULE DE NETTOYAGE
2. Vorsicht - ZUM POLIEREN KEINE PROPHY CUP BENÜTZEN
2. Precaución - NO PULIR CON UNA PULIDORA DE GOMA.



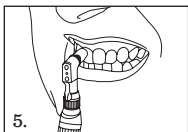
3.

3. Rimuovere il cappuccio della siringa e con attenzione posizionare una piccola quantità di gel diamantato su una plastrina. Riavvitare la siringa.
3. Préparer avec précautions une petite quantité de gel diamant.
3. Eine kleine Menge Diamantgel auftragen.
3. Dispensar cuidadosamente una cantidad pequeña de gel de diamante.



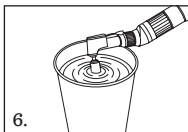
4.

4. Posare il feltrino sul gel e coprire l'intera superficie. In seguito, posare il feltrino ed il gel sulla superficie da lucidare.
4. Recouvrir complètement la surface de l'applicateur avec le gel diamant.
4. Die Stirnfläche des Filzapplikators vollkommen mit Diamantgel bedecken
4. Cubrir totalmente el aplicador de fieltro con el gel.



5.

5. Lucidare la superficie per 30 secondi (60 secondi per la ceramica), facendo una leggera pressione avanti-indietro oppure circolare.
5. Polir la surface pendant 30 secondes (60 secondes pour la porcelaine) en appliquant une pression modérée.
5. Die Oberfläche 30 Sek. (60 Sek. bei Porzellan) mit leichtem Druck polieren.
5. Pulir la superficie durante 30 segundos (60 segundos para porcelana), empleando una presión moderada.



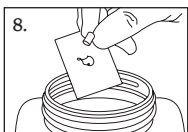
6.

6. Immergere il feltrino in poca acqua. Ciò diluirà leggermente la concentrazione di diamante. Lucidare ancora per ulteriori 30 secondi (60 sec. in caso di ceramica). Ripetere 1 volte, finché si raggiunge il livello di lucidatura desiderato.
6. Tremper l'applicateur dans l'eau. Polir à nouveau pendant 30 secondes (60 secondes pour la porcelaine). Répéter l'opération 1 fois.
6. Den Filzapplikator in Wasser eintauchen. Nochmals 30 Sek. (60 Sek. bei Porzellan) polieren. Vorgang 1 mal wiederholen.
6. Sumergir el aplicador de fieltro en agua. Pulir nuevamente durante 30 segundos (60 segundos para porcelana). Repetir el paso una vez más.



7.

7. Quando si è completato l'utilizzo di gel, sciacquare abbondantemente la superficie con acqua.
7. Rincer la surface à l'eau après le polissage.
7. Die Oberfläche nach dem Polieren mit Wasser spülen.
7. Al finalizar, enjuagar la superficie con agua.



8.

8. Gettare via il feltrino usato. Pulire e sterilizzare il mandrino, prima dell'utilizzo successivo.
8. Mettre le matériel utilisé au rebut. Stériliser le mandrin avant toute nouvelle utilisation.
8. Den gebrauchten Filzapplikator entsorgen. Der Mandrel ist wiederverwendbar (sterilizzierbar).
8. Desechar los materiales usados. Esterilizar el mandril antes de volverlo a utilizar.