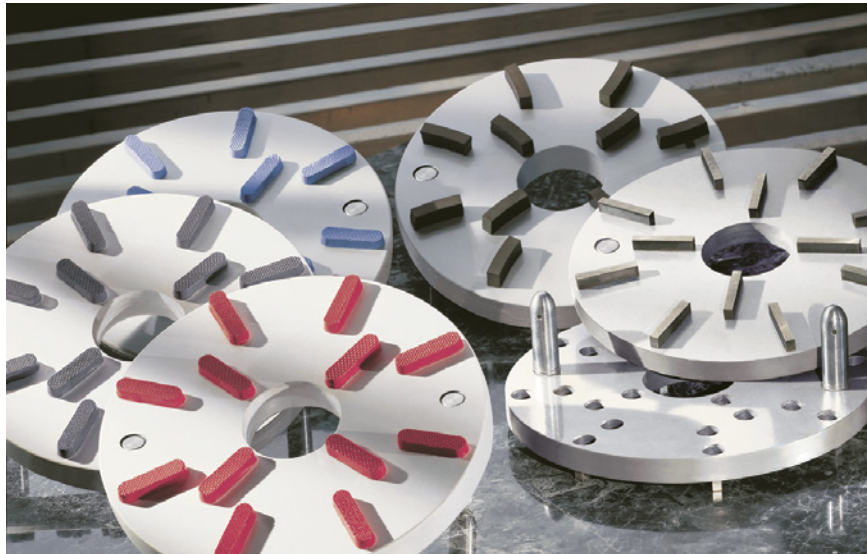




Diamond Products for
FINISHING & POLISHING STONE





SLABMASTER™

Slabmaster™ diamond discs

- Exceeds original factory finish on granite and marble.
- Quick grit changes.
- Fits most radial arm machines.
- Large pin attachment.
- Very few steps to final finish.



Finish Capabilities of Each Step	
Grit	Comments
#1 (30)	For heavy grinding.
#2 (50)	Perfect to break an existing finish for a repair.
#3 (120)	Leaves a honed finish. If any large scratches are visible, go to #2.
#4 (220)	Leaves a dull polish. No scratches should be visible.
#5 (400)	Low gloss polish. Use more pressure than with #4.
#6 (800)	Medium gloss polish. Use same pressure as with #5.
#7 (1800)	High gloss polish. Use with high pressure and low water.
#8 (3500)	Marble felt buffing disc. For wet or dry use.



Grit	Air Gauge Settings						Marble
	8" System for Granite*			10" System for Granite			
	Soft	Med	Hard	Soft	Med	Hard	
#1 (30)	50	75	100	100	150	200	50
#2 (50)	75	100	125	150	200	250	50
#3 (120)	75	100	125	150	200	250	-
#4 (220)	100	125	150	200	250	300	50
#5 (400)	100	125	150	200	250	300	-
#6 (800)	150	200	250	300	400	500	-
#7 (1800)	75	100	125	150	200	250	-
#8 (3500)	-	-	-	-	-	-	50

*8" System is not for use on marble.



Grit	SLABMASTER™		
	8" (Slide pin - Granite)	10" (Large pin) <i>7 1/4" between pins</i>	10" (Slide pin) <i>4 1/2" between pins</i>
	Part No.	Part No.	Part No.
30 X Coarse	-	-	-
#1 (30)	C6750201	C6750001	C6750101
#2 (50)	C6750202	C6750002	C6750102
#3 (120)	C4750203	C4750003	C4750103
#4 (220)	C4750204	C4750004	C4750104
#5 (400)	C4750205	C9751004	C9751104
#6 (800)	C4750206	C9751005	C9751105
Granite buff	C9201207	C9751006	C9751106
Marble buff	-	C9751008	C9751108
Complete System	C9751200	C9751000	C9751000



P.B.S.® FORM TOOLS

P.B.S.® Clean Up Diamond Form Tools

- For cleaning up stone edges after any cutting operation.
- Very rapid stock removal under harsh conditions.
- Available for CNC sleeves or gas adaptor.
- Also available with a template bearing for radial arm machines.
- Added cove for grinding sharp edges to prevent scratching an almost finished countertop.
- Special shapes and sizes are available upon request.
- Can be replated with new diamonds.



SUPER-ROK™

Super-Rok™ diamond discs

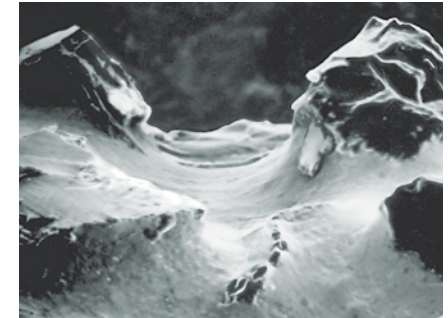
Extremely rugged due to P.B.S.® braze bond technology. Rapid material removal makes it an excellent all around grinding tool for all hard materials.

- For concrete, granite, marble, limestone.
- Perfect for installation crews and fabrication shops.

- Ideal for grout chasing, fitting and shaping edges, roughing, texturing and surfacing.
- Can be used wet or dry.
- Available in many diameters, in formed or mounted versions.



SUPER-ROK™		
Grit	4" (5/8"-11 Mounted)	7" (Formed)
	Part No.	Part No.
40	C3440088N	C3410579N
100	C3440089N	
5/8"-11 Adaptor for 7" formed		C915P2222



P.B.S.® braze bond. Crystals are permanently attached.



P.B.S.® ROUTERS

P.B.S.® diamond routers for marble

- For construction grade 1/2" diameter spindle routers and tile saws.
- P.B.S.® technology produces an aggressive tool that profiles stone quickly without loading and offers extended life over normal routers.

- Use immediately after a sawing or rough shaping operation to prepare the surface for final finishing.
- May be used wet or dry. Wet usage extends the tool life.



P.B.S.® ROUTERS					
Shape	Shaft Dia. & Length	Stone Thickness	Radius	O.D.	Abrasive Length
Straight	1/2" x 2"	-	Flat	3/8"	1"
Straight	1/2" x 2"	-	Flat	1/2"	1"
Straight	1/2" x 2"	-	Flat	5/8"	1"
Straight	1/2" x 2"	-	Round	3/8"	1"
Straight	1/2" x 2"	-	Round	1/2"	1"
Straight	1/2" x 2"	-	Round	5/8"	1"
Demi-Bull	1/2" x 2"	3/4"	3/8"	2"	-
Demi-Bull	1/2" x 2"	1-1/2"	3/4"	2"	-
Full-Bull	1/2" x 2"	3/4"	3/8"	2"	-
Full-Bull	1/2" x 2"	1-1/2"	3/4"	2"	-

P.B.S.® SINKHOLE TOOLS
Size and grit
3/8" x 3/8" demi-bull
1/2" x 1/2" demi-bull

METAL BOND SINKHOLE TOOLS FOR GRANITE
Shape and size
Demi-bull 3/8 x 3/16
45° 3/8 x 45°
Demi-bull 1/2 x 1/4



Electroplated bond. Crystals can come out.



P.B.S.® SINKHOLE TOOLS
Size and grit
1" x 2-1/4" gas
2" x 2" gas
50 x 35 mm, #50
50 x 35 mm, #200
50 x 35 mm, #400
40 x 30mm #50
40 x 30mm #200
3" edge #50
3" edge w/cove #50
3" edge #80
4" drainboard

***Call for product pricing and availability**



STRAIGHT-EDGE™

Straight-Edge™ diamond discs

- For 4" automatic edging machinery.
- For polishing straight edges on "C-Frame" machinery.
- Eliminates workpiece end scratches and delivers a better finish faster than any other tool.
- Perfect for edges 3/4" or thicker.
- Set includes a buffing disc for an extra rich color depth and high gloss finish on granite.



STRAIGHT-EDGE™ 4" (Snail lock)								
Grit	Color Code	Part No.	Operating Guidelines					
			Marble	Granite	Travel Speed Ft/min	Passes	Pressure	
							2cm thick	3cm or more
Cupwheel (F)	●	C634002	●	●	65	6	50	65
#1	●	C475001	●	●	30	6	50	65
#2	●	C475002	-	●	30	6	50	65
#3	●	C975003	-	●	30	6	50	65
#4	●	C975004	-	●	30	6	50	65
#5	●	C975005	-	●	30	6	50	65
Set of 6 grits		C975400	-	-	-	-	-	-



METAL BOND CUPWHEELS



SUPER-EDGE™ 4"



SUPER-EDGE™ 5 STEP

METAL BOND CUPWHEELS 4" (1/2" hole) (Snail lock)

Grit	Color Code	Part No.
50	●	C634001
150	●	C634002



Metal Bond Cupwheels

- Specifically for automatic edging machines.
- Snail lock mounting plate for quick and easy grit changes.
- Available in x-coarse, coarse, medium, and fine grit sizes.
- Color coded for easy identification.
- For marble or granite.
- Will shape full bullnose profiles and calibrate straight edges.
- Water diffuser for uniform water dispersion to the work area.

Super-Edge™ 5 Step diamond discs

- Only 5 steps for complete curved edge processing on automatic machines.
- Produces a finished product in the fastest time possible.
- Redesigned for faster cutting.
- Three rugged resin polishing discs that match or exceed the existing surface polish.
- Much faster and more cost effective than conventional discs.
- Slightly over 300 passes for a finished bullnose edge compared to 500 with regular tools.
- Hook and loop snail-lock holder saves time and eliminates hard stop adjuster when switching from metal hard stop to pressure polishing settings.



SUPER-EDGE™ 5 STEP 4" (Female Hook and Loop)

Grit	Color Code	Part No.	Est. Life lin. ft.	Spindle Press. lb/in2	Travel Speed ifm	Start Stop angle	Miter Angle
Cupwheel (C)	●	C634001	2000	Hard Stop	50	4-176	6.0
Cupwheel (F)	●	C634002	4000	Hard Stop	100	0-180	2.6
Step 3	●	C911D4153	1000	50	100	4-176	2.4
Step 4	●	C911D4154	1200	50	100	4-176	2.2
Step 5	●	C911D4155	2000	50	100	20-160	2.0



SUPER-EDGE™

Grit	Color Code	4" (Female Hook and Loop)		Operating Guidelines							
		Part No.	4" (Snail lock) Part No.	Granite			Marble	Operating Pressure lb/in2	Travel Speed Lfpm	Est. Life Lin. Ft.	
				Black	Med.	Light					
50	●	C911D4120	C911D4220	-	●	-	-	30	85	300	
120	●	C911D4122	C911D4222	●	-	-	-	30	85	500	
220	●	C911D4123	C911D4223	●	●	●	●	30	85	800	
400	●	C911D4124	C911D4224	●	●	-	-	30	85	1000	
800	○	C911D4126	C911D4226	-	-	●	●	30	85	1200	
1800	●	C911D4127	C911D4227	●	●	-	-	35	85	1500	
3500	●	C911D4128	C911D4228	●	●	●	●	35	85	2000	

Super-Edge™ 4" diamond discs

- For new generation, high-production C-frame machinery.
- Faster than competing polishing systems.
- Low abrasive and labor production costs.
- For marble, granite, synthetic and agglomerated stones.
- Use immediately after any moderately coarse metal bond shaping diamond tool to speed up the finishing process and to reduce or eliminate need for rework.
- No final buff is required, and the gloss achieved will exceed the surface polish.
- Available with hook and loop or rigid snail-lock backing.



SUPER-EDGE™ 5"

Super-Edge™ 5" and 6" diamond discs

- For all in-line multihead automated edge polishing machinery.
- For polishing marble, granite, synthetic stones, and agglomerated stones.
- Use immediately after a metal bond forming tool to speed up the finishing process and to reduce or eliminate costly rework.
- Super-Edge™ diamond discs produce a better finish in fewer passes than any other tool.
- No final buff is required.



SUPER-EDGE™ (Snail lock)									
Grit	Color Code	Number of Heads / Finish Quality		Number of Heads / Finish Quality					
		5"	6"	5 / Best	5 / Fast	6 / Best	6 / Fast	7 / Best	7 / Fast
50	●	C911D5200	C911D6200	•	•	•	•	•	•
120	●	C911D5202	C911D6202	•	•	•	•	•	•
220	●	C911D5203	C911D6203	•	•	•	•	•	•
400	●	C911D5204	C911D6204	-	•	-	•	•	•
600	●	C911D5205	C911D6205	•	-	•	-	•	-
800	○	C911D5206	C911D6206	-	•	•	•	•	•
1800	●	C911D5207	C911D6207	•	-	-	•	•	•
3500	●	C911D5208	C911D6208	-	-	•	-	-	•



SUPER-EDGE™ PLUS

Super-Edge™ Plus 5" and 6" diamond discs

- Same performance advantages of Super-Edge™.
- **New!** Pigmentation has been removed from the diamond section to alleviate color transfer onto natural and synthetic surfaces.
- Color coding for easy identification is now located in the support side of disc.
- Supports fitted with three radial holes to facilitate locking the disc to ease the removal operation.



SUPER-EDGE™ Plus (Snail lock)									
Grit	Color Code	Number of Heads / Finish Quality		Number of Heads / Finish Quality					
		5"	6"	5 / Best	5 / Fast	6 / Best	6 / Fast	7 / Best	7 / Fast
50	●	C9110001	C9110011	•	•	•	•	•	•
120	●	C9110002	C9110012	•	•	•	•	•	•
220	●	C9110003	C9110013	•	•	•	•	•	•
400	●	C9110004	C9110014	-	•	-	•	•	•
600	●	C9110005	C9110015	•	-	•	-	•	-
800	○	C9110006	C9110016	-	•	•	•	•	•
1800	●	C9110007	C9110017	•	-	-	•	•	•
3500	●	C9110008	C9110018	-	-	•	-	-	•

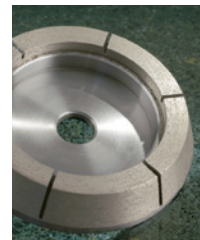
Super-Edge™ 5" and 6" Hybrid and Metal Bond discs

The hybrid tools combine the best of resin and metal bonds. They grind very fast yet leave an exceptionally fine finish while lasting a long time. When inserted in your current lineup of polishing discs, they will increase your current production on any existing inline polishing machine.



HYBRID	
S4750304	Super-Edge™ 6" Coarse Hybrid Snaillock
S475001	Super-Edge™ 6" Fine Hybrid Snaillock
S4750305	Super-Edge™ 5" Coarse Hybrid Snaillock
S475002	Super-Edge™ 5" Fine Hybrid Snaillock

A new Hybrid fine grit replaces normal #50 & #120 grits. With the extra spindle, we recommend doubling up on #220 Super-Edge™ grits for the best possible finish with darkest depth of color. If more removal than fine grit is needed, use Coarse. In both cases reduce operating pressure to minimal setting to avoid excessive removal.



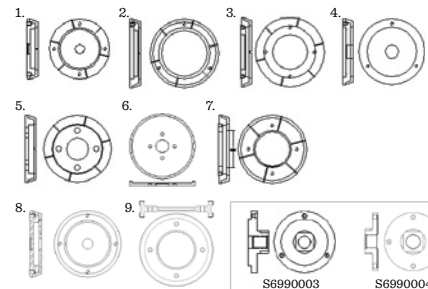
Metal Bond Wheels

- Standard four screw mount for Velocity and Fastback machines. Mounts for Montresor and other brands are also available.
- **CAUTION:** When converting from SiC bricks to diamond tools, the spindle bearings may need to be replaced first. Vibration produced by excessive wear from traditional abrasives will cause erratic performance with the diamond tools.

METAL BOND WHEELS - Corner removal, thickness gauging, bullnose shaping. (4-1/4" x 20 screws on a 4.21" bolt circle)

Size	Part No.
5" (w/ screw mounts)	S6750067
5" snail-lock adaptor	C915P500
6" (w/ screw mounts)	S6750090
6" snail-lock adaptor	C915P600

METAL BOND



- 1. S6750067 Park Velocity 5" Calibrator (All) #50
- 2. S6750089 Montresor 5" Thick & Corner Grind #50
- 3. S6750090 Park Velocity 6" Thick & Corner Grind #50
- 4. S6750093 Bullnose Shaper 5" #50 (Need S6990003 Adaptor)
- 5. S6750094 Corner Grinder #50
- 6. S6750095 10" Thickness Calibrator #50
- 7. S6750096 Park Velocity 6" Smart Spindle #50
- 8. S6750097 Bullnose Shaper 5" #50 (Need S6990004 Adaptor)
- 9. S6750085 4" Face Milling Cutter

S6990001	Holder 1/2" Gas For Milling Cutter	S6990003	M30 Adaptor For S6750093
S6990002	Holder 5/8" X 11" For Milling Cutter	S6990004	5" M30 X 3.5 Adaptor, 3 Holes For S6750097

ELECTROPLATED TOOLS

Electroplated tools are cool cutting despite their high removal rates and leave no distortion of the workpiece surface. These tools save production time and deliver consistent finishes. Electroplated flexible tools require minimal operator effort yet promote more throughput to increase productivity. They are long lasting and reduce tooling costs. Hook and loop backing is standard and allows for quick grit changes.

Genesis™ diamond discs

- Grind, hone and polish surfaces to a smooth finish.
- They work well on almost all hard surfaces and substances such as: glass, ceramics, stone, plastics, concrete and composites.
- Discs and pads are stocked in many sizes.
- Special order up to 24" diameter with hook and loop, PSA and magnetic backing.



GENESIS™



GENESIS™ (With female hook and loop)								
Grit	3" (No hole) Part No.	4" (No hole) Part No.	4" (5/8" hole) Part No.	5" (No hole) Part No.	5" (5/8" hole) Part No.	7" (7/8" hole) Part No.	12" X 12" Part No.	12" X 12" (no back) Part No.
70	C911G3101	C911G4101	C911G4201	C911G5101	C911G5201	C911G7201	C914S2001	C914S1001
120	C911G3102	C911G4102	C911G4202	C911G5102	C911G5202	C911G7202	C914S2002	C914S1002
220	C911G3103	C911G4103	C911G4203	C911G5103	C911G5203	C911G7203	C914S2003	C914S1003
400	C911G3104	C911G4104	C911G4204	C911G5104	C911G5204	C911G7204	C914S2004	C914S1004
600N*	C911G3105N	C911G4105N	C911G4205N	C911G5105N	C911G5205N	C911G7205N	-	-
600R	C911G3105R	C911G4105R	C911G4205R	C911G5105R	C911G5205R	C911G7205R	C914S2005	C914S1005
800	C911G3106	C911G4106	C911G4206	C911G5106	C911G5206	C911G7206	C914S2006	C914S1006
1800	C911G3107	C911G4107	C911G4207	C911G5107	C911G5207	C911G7207	C914S2007	C914S1007
3500	C911G3108	C911G4108	C911G4208	C911G5108	C911G5208	C911G7208	C914S2008	C914S1008
Set (8 Grits)	C911G310R	C911G410R	C911G420R	C911G510R	C911G520R	C911G720R	-	-

* Not included in sets.



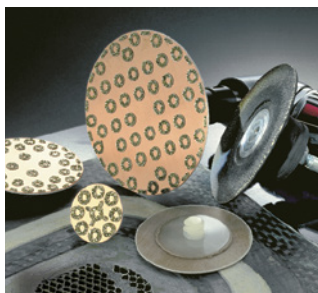
BABY ROK™

Baby-Rok™ diamond discs

- Semi-flexible and well suited for demanding surface grinding applications.
- They will grind almost any material at incredible stock removal rates, leaving a surface ground to desired size and geometry.
- Ideal for removing deep scratches in stone, glass or composites left by sawblades during cutting or for exposing aggregates in concrete.



BABY ROK™ (Semi rigid - with female hook and loop)				
Grit	3" (1-1/4" hole) Part No.	4" (1-3/4" hole) Part No.	5" (2-3/4" hole) Part No.	7" (4-1/4" hole) Part No.
30	C911R30303	C911R40303	C911R50303	C911R70303
50	C911R3030	C911R4030	C911R5030	C911R7030
70	C911R3031	C911R4031	C911R5031	C911R7031
120	C911R3032	C911R4032	C911R5032	C911R7032
220	C911R3033	C911R4033	C911R5033	C911R7033
400	C911R3034	C911R4034	C911R5034	C911R7034



TECH-LOK™

Tech-Lok™ diamond discs

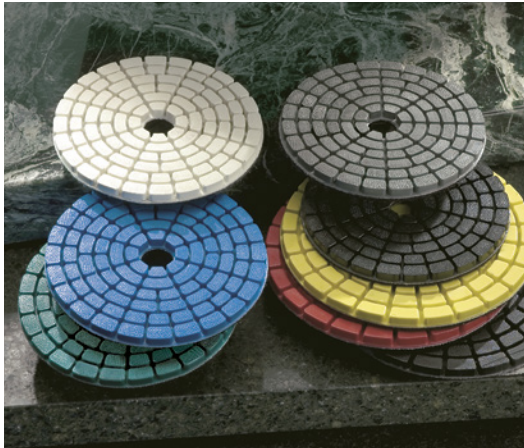
- Similar grit configuration to Baby-Rok™.
- Attach quickly with twist lock adapters.



TECH-LOK™			
Grit	1" Part No.	2" Part No.	3" Part No.
30	C911R10403	C911R20403	C911R30403
50	C911R1040	C911R2040	C911R3040
70	C911R1041	C911R2041	C911R3041
120	C911R1042	C911R2042	C911R3042
220	C911R1043	C911R2043	C911R3043
400	C911R1044	C911R2044	C911R3044
Holder	C915P0010	C915P0020	C915P0030

RESIN BONDED TOOLS

Diamonds are impregnated throughout the entire depth of the tool. New diamond cutting points are continually exposed throughout the entire tool life. Resin polishing discs offer the best possible alternative for polishing difficult surfaces to a mirror finish. Hook and loop backing allows for quick grit changeovers.



SHINE-X™

Shine-X™ diamond discs

- Our premium diamond polishing discs.
- Shine-X™ works extremely well on both marble and granite.
- Double thickness (4mm) for long life. This added thickness allows the discs to be self-opening.
- Works fast - typically only 4 passes per grit for all grit sizes.
- Buffing is generally required for dark stones.
- For the best performance with 4" disc, use 10 lb. of force for edges 3/4" or less and 20 lb. for thicker.
- Set water flow just enough not to run the polishing discs dry.



SHINE-X™ (With female hook and loop, 5/8" hole)				
Grit	Color Code	3"	4"	5"
		Part No.	Part No.	Part No.
50	●	C911D3300	C911D4300	C911D5300
120	●	C911D3302	C911D4302	C911D5302
220	●	C911D3303	C911D4303	C911D5303
400	●	C911D3304	C911D4304	C911D5304
800	○	C911D3306	C911D4306	C911D5306
1800	●	C911D3307	C911D4307	C911D5307
3500	●	C911D3308	C911D4308	C911D5308
Set (7 Grits)		C911D330D	C911D430D	C911D530D



SUPER-DIASHINE™

Super-Diashine™ diamond discs

- High flexibility diamond discs.
- Highest quality finish on granite and marble with minimal effort at the lowest cost possible.
- Only light pressure is required to achieve excellent results, due to the free cutting action of the diamonds.
- Produce a high, monument quality finish in a fraction of the normal time.



SUPER-DIASHINE™ (With female hook and loop)				
Grit	Color Code	3" (1-3/8" hole)	4" (1-1/2" hole)	
		Part No.	Part No.	Part No.
50	●	C911D3500	C911D4500	C911D4500
120	●	C911D3502	C911D4502	C911D4502
220	●	C911D3503	C911D4503	C911D4503
400	●	C911D3504	C911D4504	C911D4504
800	○	C911D3506	C911D4506	C911D4506
1800	●	C911D3507	C911D4507	C911D4507
3500	●	C911D3508	C911D4508	C911D4508
Set (7 Grits)		C911D350D	C911D450D	C911D450D

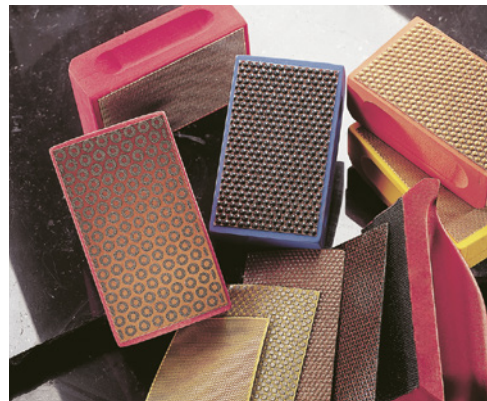
Diamond handpads and strips excel at abrading marble, granite, agglomerated stone, concrete, ceramics, glass and composites. Available in both firm or flexible bases, their ideal hand size allows the finishing of surface shapes and areas that are hard to reach with power tools.

Handpads

- Easy-to-grip foam base covered by a layer of diamond.
- Available with either Genesis™ or Rok™ diamond layer to suit any application.

Strips

- Each strip is individually backed with loop material.
- Can be attached to the hook backed Handblock™ base or used as is for maximum flexibility.



HANDPADS



HANDPADS 2-1/4" X 4" X 1-1/8"				STRIPS (Female H & L) 2-1/4" X 4"	
Grit	Color Code	GENESIS™	ROK™	GENESIS™	
		Part No.	Part No.	Part No.	
50	●	-	C913H1040	-	
70	●	C913H1011	C913H1041	C912H3111	
120	●	C913H1012	C913H1042	C912H3112	
220	●	C913H1013	C913H1043	C912H3113	
400	●	C913H1014	-	C912H3014	
600R	●	C913H1015R	-	C912H3015R	
800	○	C913H1016	-	C912H3016	
1800	●	C913H1017	-	C912H3017	
3500	○	C913H1018	-	C912H3018	
Set (8 Grits)		C913H101R	-	C912H301R	
600N	●	C913H1015N	-	C912H3015N	
Handblock™		-	-	C915TH3099	



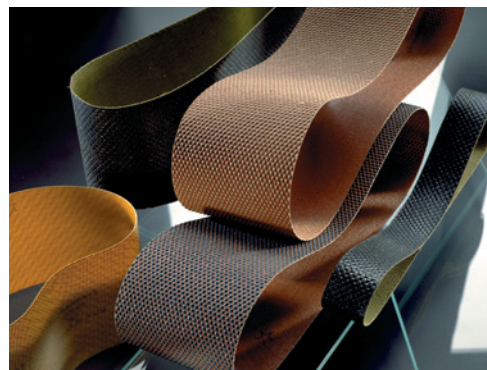
TURBO-ROK™

Turbo-Rok™ Lippage Tools

- Rugged electroplated Rok™ discs mounted onto a plastic chamfered support with a hook fastener base.
- Fits all machines that use hook and loop attachments.



TURBO-ROK™ Diamond lippage removal discs For the 13", 17", 20" Systems	
Grit	Part No.
30	C911T30103
70	C911T3011



BELTS

Diamond Belts

- Duragrit™ and Polyrez™ diamond belts are designed to replace conventional abrasive belts.
- For flat glass, ceramics, composites, laminated glass, mirrors, decorative glass, crystal, artistic glass, and scientific glass.
- Expanding drum belts are available.
- Custom sizes and grits are available.



DURAGRIT™ diamond belts				
Grit	1-1/8" x 21"	3" x 21"	3" x 24"	4" x 106"
	Part No.	Part No.	Part No.	Part No.
70	C910B1911S†	C910B4911S†	C910B4811S†	C910B3301
120	C910B1912S†	C910B4912S†	C910B4812S†	C910B3302
220	C910B1913S†	C910B4913S†	C910B4813S†	C910B3303
400	C910B1914S†	C910B4914S†	C910B4814S†	-
4" x 7"	Graphite Pad	C915X0615		

†Package contains 2 pads per belt.



FLOORMASTER™

FloorMaster™ diamond discs

- For the floor restoration professional.
- Our top-of-line diamond discs for floors.
- Full 1/4" (6mm) thick diamond segments for extended life.
- Adaptable to any type of floor machinery.
- For marble, limestone, travertine, terrazzo and granite.



FLOORSHINE™

FloorShine™ diamond discs

- Value priced diamond tools for stone floors.
- Delivers high mechanical shine on compatible stones.
- Adaptable to any type floor machinery.
- Large disc sizes available for walls and handwork.
- For marble, travertine and terrazzo.

Grit	Color Code	⚠ FLOORMASTER™		⚠ FLOORSHINE™	
		3"	3"	4"	5"
#1 (30)	●	C911D38003	C911D30103	C911D40103	C911D50103
#2 (50)	●	C911D3800	C911D3010	C911D4010	C911D5010
#3 (120)	●	C911D3802	C911D3012	C911D4012	C911D5012
#4 (220)	●	C911D3803	C911D3013	C911D4013	C911D5013
#5 (400)	●	C911D3804	C911D3014	C911D4014	C911D5014
#6 (800)	○	C911D3806	C911D3016	C911D4016	C911D5016
#7 (1800)	●	C911D3807	C911D3017	C911D4017	C911D5017
#8 (3500)	●	C911D3808	C911D3018	C911D4018	C911D5018



DIA-GLO™

DIA-GLO™ buffing compounds

Dia-Glo™ buffing compounds are specifically formulated to achieve the best possible finish on stone surfaces. Easy to use, they never mark the stone in any way and yield incredibly high gloss finishes in a very short time. These compounds can be used in stone fabricating shops, for floor restoration and as a maintenance buffing compound.

- Dia-Glo™ M is for marble, terrazzo and agglomerated marble surfaces.
- Dia-Glo™ D is for dark colored granite. Its dark hue will not highlight the normal microscopic cracks on stone surfaces and will bring out the rich color and gloss on medium to dark stone.
- Dia-Glo™ L is for light colored granite.

DIA-GLO™ buffing compound						
Size	Marble	Color	Granite-Light	Color	Granite-Dark	Color
	Part No.	Code	Part No.	Code	Part No.	Code
1 liter	C920M003	●	C920GL03	m	C920GD03	●
10 liter	C920M024	●	C920GL24	m	C920GD24	●

DIA-GLO™ S buffing system

- Easily and rapidly restore gloss and color to black granite floors.
- A strong cutting action takes place with the combination of the stainless steel pad and the mixture of alkali powder and acidic liquid.
- Minor lippage does not need to be removed when using this system.
- Will restore black granite floors measuring as low as 20 points on a gloss-meter up to 80 or more points, with exceptional ease.

DIA-GLO™ S Diamond buffing system for black granite				
Size	Powder Part No.	Liquid Part No.	Item	Part No.
1 pt.	C920SP01	C920SL01	Fast working 17" SS pad	C915SS17
5 qt.	C920SP02	C920SL02	500 ft ² Kit	C920SKIT



FELT DISCS

Felt buffing discs

- Used to achieve the final high gloss finish after a polishing operation.
- Hook and loop backed,
- Only 1/4" hard density felt is used. Lower density felt does not produce the same results.
- When combined with Dia-Glo™ buffing compound, discs can be used on granite, marble or terrazzo surfaces.

FELT BUFFING DISCS	
Size	Part No.
3"	C938F3
4"	C938F4
5"	C938F5



BACKPLATES

Backplates

FLEXFOAM™ BACKPLATE
5/8" X 11" - Female thread insert
(Centerhole - male hook & loop)

Size	Part No.
3"	C915P0301
4"	C915P0401
5"	C915P0501
7"	C915P0701

SNAIL LOCK BACKPLATE
(Heavy duty w/male hook & loop)

Size	Part No.
4" x 1/2" thick	C915P0443
4" x 3/8" thick	C915P0441
5" x 3/8" thick	C915P0541

ALUMINUM HOLDER
5/8" X 11" - Female thread insert

Size	Part No.
100mm (4")	C915P0490
125mm (5")	C915P0590
150mm (6")	C915P0590

FLEXFOAM™ INSERT
(Side A - male hook & loop)
(Side B - female hook & loop)

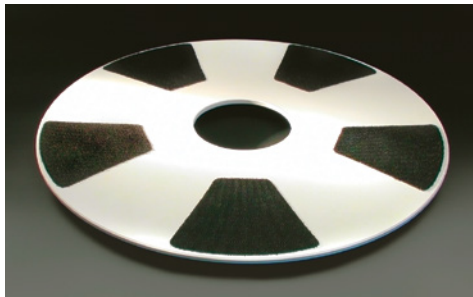
Size	Part No.
3"	C915P3310
4"	C915P4440

BACKPLATE (with 1/4" mandrel)
(No threads - male hook & loop)

Size	Part No.
3"	C915P0310
4"	C915P0410

TECH-LOK™ (1/4" mandrel)

Size	Part No.
1"	C915P0010
2"	C915P0020
3"	C915P0030



TECHPLATES™

Techplates™ attachment plates for diamond tools

- These plates eliminate waviness and greatly increase the shine quality of the finished floor by providing a completely flat attachment surface for diamond tools.
- They pay for themselves in diamond savings, eliminated reworks and repeatability of work.
- 17" diameter is standard. Other sizes available upon request.

TECHPLATES™	
Size	Part No.
17"	C915P1701

Carving ⚠

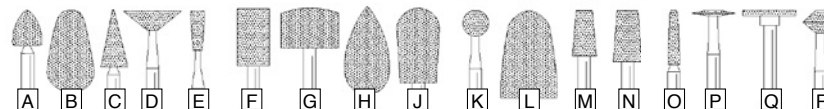
PRODIA™ CARVING TOOLS (.092 shank diameter)					
Shape	Part No.	Shape	Part No.	Shape	Part No.
A	CD03072C	G	CD03063C	N	CD03021M
B	CD03064C	H	CD03069C	O	CD03060M
C	CD03011M	J	CD03065C	P	CD03044M
D	CD03030M	K	CD03010M	Q	CD03038M
E	CD03015M	L	CD03073C	R	CD03043M
F	CD03023M	M	CD03022M		

***CALL FOR AVAILABILITY**

Attaching ⚠

Item	HOOK AND LOOP MATERIAL (no hole)			
	Male Part No.		Female Part No.	
	PSA backing	Plain backing	PSA backing	Plain backing
3" disc	C915V3230	C915V3200	C915V3130	C915V3100
4" disc	C915V4230	C915V4200	C915V4130	C915V4100
12" square	C915V1223	C915V1220	C915V1213	C915V1210

PRODIA™ CARVING TOOLS



ORDERING AND RETURN MERCHANDISE POLICY

TO PLACE AN ORDER:

ORDER ONLINE at www.abrasive-tech.com
Email: csr@abrasive-tech.com
Phone: 1.740.548.4100 • Fax: 1.740.548.7617
Mail: 8400 Green Meadows Drive N.
Lewis Center, Ohio 43035 • USA

PROVIDE THE ORDER DESK WITH:

1. Your customer number
2. Product type, stock number, and quantities
3. Dollar value of all stock orders must meet the minimum order requirement of \$50.00.

*All "special orders" require a \$200.00 net minimum.

FOR ALL OTHER INQUIRIES:

Email: csr@abrasive-tech.com
Phone: 1.740.548.4100 • Fax: 1.740.548.7617

DELIVERY:

Orders for in-stock products placed by 11:30 a.m. EST will ship same day. Shipping for non-stock products is quoted per order.

TERMS:

Credit card payments will be processed through PayPal using Mastercard®, Visa®, Discover®, or American Express®. Net 30 days from the date of invoice with approved credit or prepayment.

All prices are F.O.B. Lewis Center, OH for domestic shipments or EXW Lewis Center, OH USA for international shipments. All shipping and related charges will be added to the invoice.

RETURN MERCHANDISE POLICY:

Please refer to the Policies drop-down menu on our website at www.abrasive-tech.com for our Return Merchandise Policy or contact one of our Customer Service Team Members for assistance.

FOR PRODUCT PRICING, PLEASE CONTACT CUSTOMER SERVICE. PRICES AND PRODUCT SPECIFICATIONS ARE SUBJECT TO CHANGE WITHOUT NOTICE.

AT is not liable under any circumstances for any direct, indirect, special, consequential, or incidental damages (including lost profits) in any way relating to the merchandise or to this agreement.



WORLD HEADQUARTERS

8400 Green Meadows Dr. N.
P.O. Box 545
Lewis Center, Ohio 43035 USA
P: 1.740.548.4100
F: 1.740.548.7617

EUROPEAN HEADQUARTERS

Unit 11 Boundary Business Ct.
92-94 Church Rd.
Mitcham, Surrey CR4 3TD UK
P: + 44 207 4710200
F: + 44 207 4710202

Go to www.abrasive-tech.com to order online or find a distributor near you.



WORLD HEADQUARTERS
United States
P: 1.740 548.4100
F: 1.740 548.7617

EUROPEAN HEADQUARTERS
United Kingdom
P: +44 207 471.0200
F: +44 207 471.0202

Go to www.abrasive-tech.com to order
online or find a distributor near you.

© 2023 Abrasive Technology, LLC

REV 1.2023