



Two Striper[®]

DIAMOND BURS - Faster, Cooler Cutting, Longer Lasting

Rotary Instruments and Accessories



ABOUT ABRASIVE TECHNOLOGY

Abrasive Technology develops, manufactures and markets state-of-the-art diamond and CBN tooling for grinding applications. Many of our products have unique and sophisticated applications. These applications are demanding in performance capabilities and tolerance requirements.

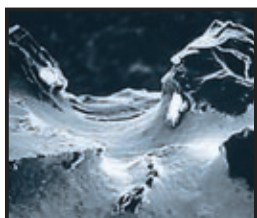
Our highly specialized superabrasive expertise has been developed through designed integration of our skilled customer service, R&D, engineering, manufacturing, and quality assurance associates.

We primarily serve the aerospace, automotive, metalworking, medical, dental, ophthalmic, gear, lapidary, glass, tile and stone industries. Each has its own challenges, requiring technically superior solutions.

We welcome the opportunity to explore new superabrasive applications and to work with you in our continual search for more efficient, environmental-friendly, cost-effective ways of doing business.

Two Striper®

The Two Striper® Difference - *Faster, Cooler Cutting and Longer Lasting*



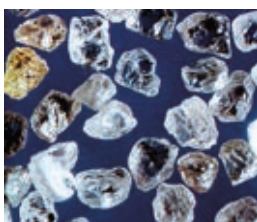
High magnification photo of diamond crystals on a Two Striper® instrument.

FASTER CUTTING - SMOOTHER GRINDING

Two Striper® instruments have a uniform distribution and high concentration of diamond crystals - permitting rapid reduction of tooth structure with less vibrational trauma and chatter. Through the exclusive P.B.S.® bonding system, more of the diamond is freely exposed at every point, resulting in faster cutting and smoother grinding.

LONGER LASTING

Diamond crystals on Two Striper® dental instruments are permanently bonded to a one-piece, hardened, stainless steel shank with Abrasive Technology's P.B.S.® bonding process. Our unique manufacturing process enables Two Striper® dental instruments to last longer and cut faster than other diamond instruments. Other diamond instrument brands use electroplating to hold the diamond crystals to the shank. Electroplating provides only a mechanical entrapment of the diamond particles, which in time allows them to work loose and pull out. The diamond particles on Two Striper® instruments can never pull out. That's why Two Striper® instruments outlast other diamond instruments.



Natural diamond crystals.

NATURAL, VIRGIN DIAMOND

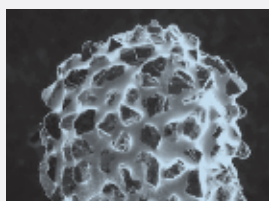
Natural, virgin diamond crystals on Two Striper® rotary instruments contain more corners and angles than the synthetic diamonds used on electroplated burs.

TWO STRIPER® P.B.S.® DIAMOND BURS VS. ELECTROPLATED DIAMOND BURS

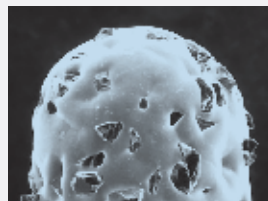
New Diamond Bur Tip

TWO STRIPER®

Before use, you can see that there are many more diamond crystals available for cutting on the Two Striper® instrument tip. Crystals on Two Striper® instruments are permanently bonded and will not pull out.



New Two Striper® bur tip



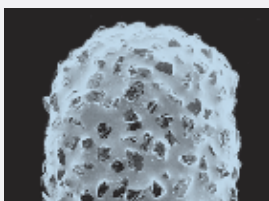
New electroplated tip

OTHER DIAMONDS

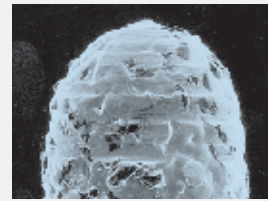
Note the lack of diamond on this electroplated tip. Some crystals are fully covered and have no exposed edges for cutting.

Used Diamond Bur Tip

After use, diamond crystals are still present on the Two Striper® instrument. Two Striper® burs last and last and last. The diamond crystals wear smooth rather than pull out.



Used Two Striper® bur tip



Used electroplated tip

Many of the crystals have pulled out from the electroplated diamond. These burs cut less efficiently than Two Striper® burs and have a shorter product life.

TS2000™ RAPID CUTTING DIAMOND BURS



LESS CHAIR-TIME FOR YOU AND YOUR PATIENTS

TS2000 saves time and money by simultaneously performing rapid gross reduction and creating a finished margin without changing instruments.

50% FASTER THAN OTHER SPIRAL DESIGNS

Permanently bonded diamond along the spiral design significantly increases performance. On average, TS2000™ burs are 50% faster even after eight preparations. The spiral action circulates water-spray more efficiently to reduce heat energy and accelerate cutting.

INCREASED EFFICIENCY - MORE COOLANT

Clearance angles in the spiral design provide efficient removal of debris and access for water coolant. This design restricts the amount of diamond in contact with the tooth at any given time, thus reducing frictional drag to increase cutting efficiency.

RAPID BULK REDUCTION - SMOOTH FINISH MARGIN

The spiral stops short of the tip to ensure a smooth margin. A finished margin is created as shown. You can easily create a chamfer, bevel, or flat shoulder by selecting one of over 40 shapes available.



CLEAN-A-DIAMOND® DRESSING STONES

The longer cleaning is delayed, the more difficult and time-consuming it becomes. Clean-A-Diamond® Mini-Square™ dressing stones are a convenient way to clean your diamond bur, following tooth preparation. After cutting a tooth, immediately plunge your diamond bur (with water-spray on) into the Mini-Square™ stone. This will effectively remove tooth particles left on the bur. Mini-Square™ dressing stones are autoclavable and reusable.

Note: Do not use with Two Striper MFS® diamond burs.



Mini-Square™
Completely sterilizable.
Use at chairside. Package of 12.
Order Number
CFMSDSD4002



Clean-A-Diamond®
This large stone is easy to use.
Order Number
CFMSDSD1001

Prodia™ DIAMOND BURS AND STAINLESS STEEL INSTRUMENTS

Select diamond crystals are plated onto precision-machined stainless steel bur blanks through a high quality 3-stage process. This guarantees a safe and strong diamond coating for fast and easy removal of tooth material, providing excellent results and high productivity.

The Prodia™ product range offers all popular shapes and 5 different grit sizes, including the spiral FG shape for cool and fast operation. All FG shapes may be used as a multi-use or single-patient-use bur.

Prodia™ diamond burs and instruments are the perfect choice for dentists, doctors, and healthcare professionals who seek cost effective value tools offering outstanding performance, life, and consistency.

PRODIA™ ADVANTAGES:

- Economical quality diamond tools for optimal working results.
- Select diamond crystals and stainless steel blanks for consistent quality, life and overall material removal.
- All popular shapes and 5 different diamond grit sizes.
- Available for use as a multi-use or single-patient-use product.
- CE marked and manufactured to ISO specifications.



PODIATRY / CHIROPODY

Economical electroplated diamond burs for use in podiatry/chiropody applications. 3/32" (2.38mm) diameter shank.



FG TOOLS

Economical electroplated diamond tools for use in a standard or high-speed rotary handpiece. 1/16" (1.5mm) diameter shank.



SPIRAL FG TOOLS

A more aggressive, faster cutting version of our standard FG tools. 1/16" (1.5mm) diameter shank.



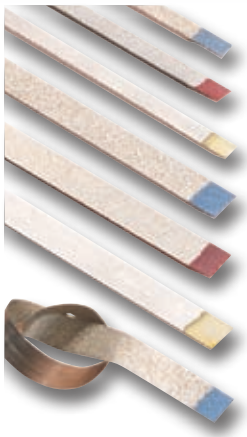
HP TOOLS

Economical electroplated diamond tools for use in a standard or high-speed rotary handpiece. Longer, larger diameter shank than FG tools. 3/32" (2.38mm) diameter shank.



INSTRUMENTS

Small stainless steel files and probes, sterilizable by any conventional method.



COMPO-STRIP® HANDHELD DIAMOND FINISHING STRIPS

Compo-Strip® flexible diamond strips are ideal for smoothing and finishing all proximal restorations and veneer margins. They have an uncoated safe center for easy, controlled access.

- Color Coded
- Flexible
- Sterilizable
- Safe-sided
- No stripping or peeling



Order Number	Width	Thickness	Grit
CECSOT6P207	100 = 2.5mm	0.15mm	T=60u
CECS5T6P209	150 = 3.75mm	0.15mm	T=60u
CECSOF6P211	100 = 2.5mm	0.127mm	F=45u
CECS5F6P213	150 = 3.75mm	0.127mm	F=45u
CECSOU6P215	100 = 2.5mm	0.1mm	UF=20u
CECS5U6P217	150 = 3.75mm	0.1mm	UF=20u
CECSAS6P227	Assorted 6 pk	Various	Various



COMPO-STRIP® 200T2 FOR ORTHODONTIC REPROXIMATION

Use the Compo-Strip® 200T2 diamond strip to simultaneously remove enamel from adjacent proximal surfaces.

- Flexible, double sided
- Safe center
- Sterilizable
- 60 micron diamond
- Fast, smooth cutting
- Ultrasonic compatible

Order Number
CERPOT3P200



COMPO-DISC® HANDHELD DIAMOND FINISHING DISCS

- Sterilizable
- Single-sided
- Edge and face-cutting
- Patented holder design
- 1mm Thick

Order Number
CECSTFTP106

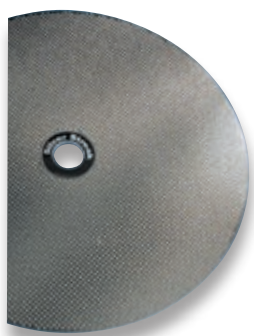


thin-flex® FLEXIBLE DIAMOND DISCS WITH TRUE EDGE CUTTING

Designed for carving ceramic and composite materials. Thin-Flex® discs are excellent for contouring and shaping all surfaces including embrasures. Thin-Flex® discs have diamond crystals wrapped around the edge of the disc to avoid "black marks" during carving procedures.

Thin-Flex® discs may be ordered individually or in "twin packs" which include two discs and a mandrel. The stainless steel HP lab mandrels feature an enlarged neck area for safer operation. The screw head and washer system guarantees true running and reduces metal fatigue.

	Single Pack Order Number	Twin Pack Order Number	Thickness	Grit
Single sided	CELBTFSG633	CELBTFTP634	0.10mm	45u
	CELBTFSG637	CELBTFTP638	0.24mm	60u
Double sided	CELBTFSG653	CELBTFTP654	0.15mm	45u
	CELBTFSG657	CELBTFTP658	0.28mm	60u



SILVERSTREAK™ DIAMOND MODEL TRIMMING WHEEL

The Silverstreak™ trimming wheel trims models faster, runs quieter and is substantially longer lasting than traditional wheels. It has an extra coarse diamond cutting surface which is patterned for aggressive, yet cool cutting. It is lightweight, durable and perfectly balanced for concentric operation.

The Silverstreak™ wheel has a 25.4mm (1 in.) mounting hole and 6.4mm (1/4 in.) thickness to fit most trimmers. Available in 12 Extra Coarse (12XC) and 10 Extra Coarse (10XC).

Ask your dealer about the availability of Silverstreak™ wheels designed to fit other popular model trimming machines.

Order Number
CFWHLOC3002 - 12"
CFWHLOC2001 - 10"



LUMINESCENCE PLUS! DIAMOND POLISHING PASTE

For patient comfort and all-surface esthetics

ALL SURFACE POLISHING - composite, porcelain, enamel, glass ionomer, precious metals, amalgam.

SINGLE-GRIT/SINGLE-STEP PASTE - saves chair-time.

INCREASE PATIENT COMFORT - contains potassium nitrate topical desensitizer.

CONVENIENT - screw-tube dispenser and improved viscosity eliminates waste.



Order Number
CFMPSSG5005 - Tube
CFMPSSG5006 - Single Dose Ampules



LUMINESCENCE® SINGLE-GEL DIAMOND POLISHING SYSTEM

Polish all surfaces in half the time.

Luminescence™ is a patented, single-gel diamond polishing system. In less than two minutes, you can polish the surface of all restorative materials: composite, glass ionomer, compomer, amalgam, precious metal and enamel. Even porcelain achieves a lustrous surface in only minutes due to the optimal concentration of micron-sized particles.

Optimum Polishing results on the CAD/CAM Vita Mark II ceramic."¹

"Adjustment finishing with a Two Striper® MF2 or MF3 alone, or as a final finishing stage after using a more coarse finishing diamond, followed by a 60-second polishing sequence with Luminescence diamond gel, was an effective procedure for optimum polishing results on the CAD-CAM Vita Mark II ceramic."

1. American J. Dentistry, Feb 2000. Post adjustment polishing of CAD/CAM ceramic with Luminescence Diamond Gel. W.J. Finger.



Order Number
CFMPSKT0002 - Complete Kit (Includes 2 mandrels, 50 felt tip applicators, 1 tube Luminescence gel)
CFMPSSG3005 - Gel Only

STAINBUSTER®

THE INNOVATIVE, PAINLESS COMPOSITE BUR

The innovative composite bur made of zircon-rich glass fiber features permanent abrasive power for minimal invasive dentistry. Stainbuster removes cement and stains from tooth surface with no damage to enamel, ceramics or soft tissues - it simply slides over the soft tissue without cutting or grinding.

The self-sharpening burs continuously maintain their abrasive power.

- Minimally invasive
- No damage to enamel, ceramics, cement, or soft tissue
- Self-Sharpener
- Pain free

DAILY PRACTICE: Stain removal, cement or composite surplus grinding, temporary cement removal, light maintenance scaling

ORTHODONTICS: Elimination of adhesive cement remnants after bracket removal

PERIODONTICS: Scaling, root surfacing, easy access to furcation

IMPLANTOLOGY: Sealing cement surplus removal even in narrow and difficult-to-reach places



Effective root planing and surfacing

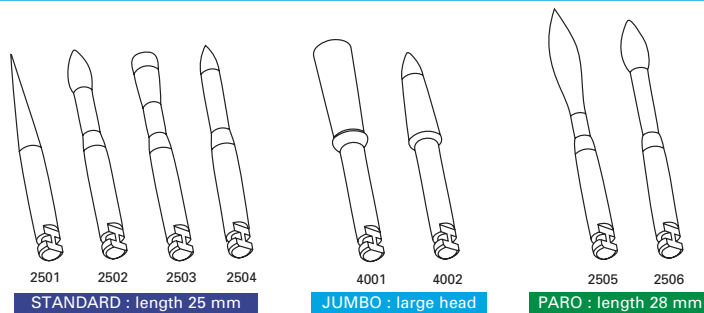


Easy calculus removal



Gentle and efficient implant cleaning

AVAILABLE SHAPES



Stainbuster Assorted Pack - Contains 6 burs

2540 One each of 2501, 2502, 2504, 2505, 2506, 4002

Stainbuster Individual Packs - Contains 6 burs

2501	2503	4001	2505
2502	2504	4002	2506



abrasive technology

www.abrasive-tech.com

8400 Green Meadows Dr. • P.O. Box 545
Lewis Center, OH 43035 USA
740.548.4100 • Fax: 740.548.7617

Two Striper® diamond dental burs are manufactured under U.S. Pat. No: 5,511,718
©Abrasive Technology 2/09